



PM-245020A

2020-11

Processes



TIG (GTAW) Welding

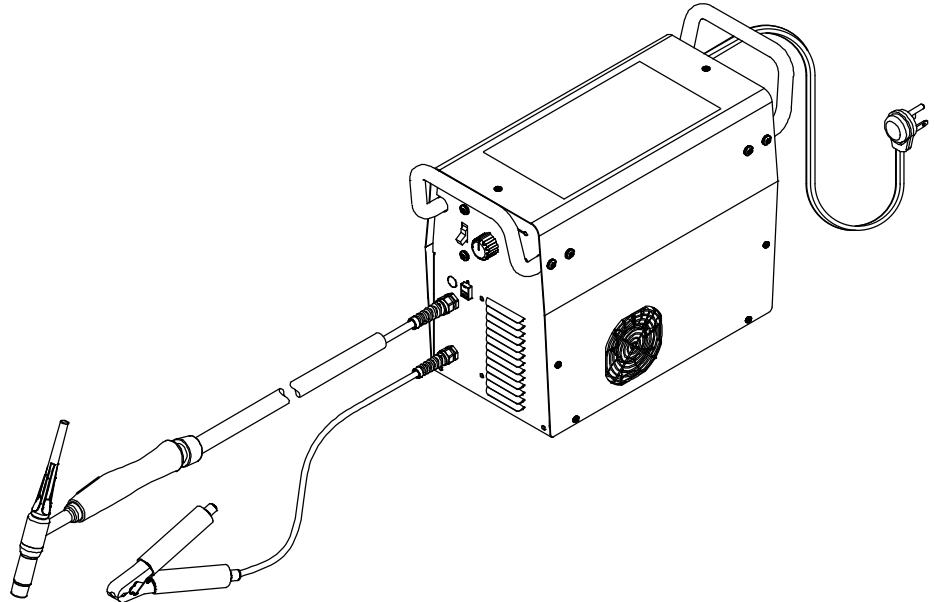
Description



230 Volt Arc Welding Power Source

EZ-TIG™ 165i

Eff w/Serial No. LK330301J And Following



PARTS MANUAL

Find us on

YouTube

www.HobartWelders.com

SECTION 1 – PARTS LIST FOR LK330301J AND FOLLOWING

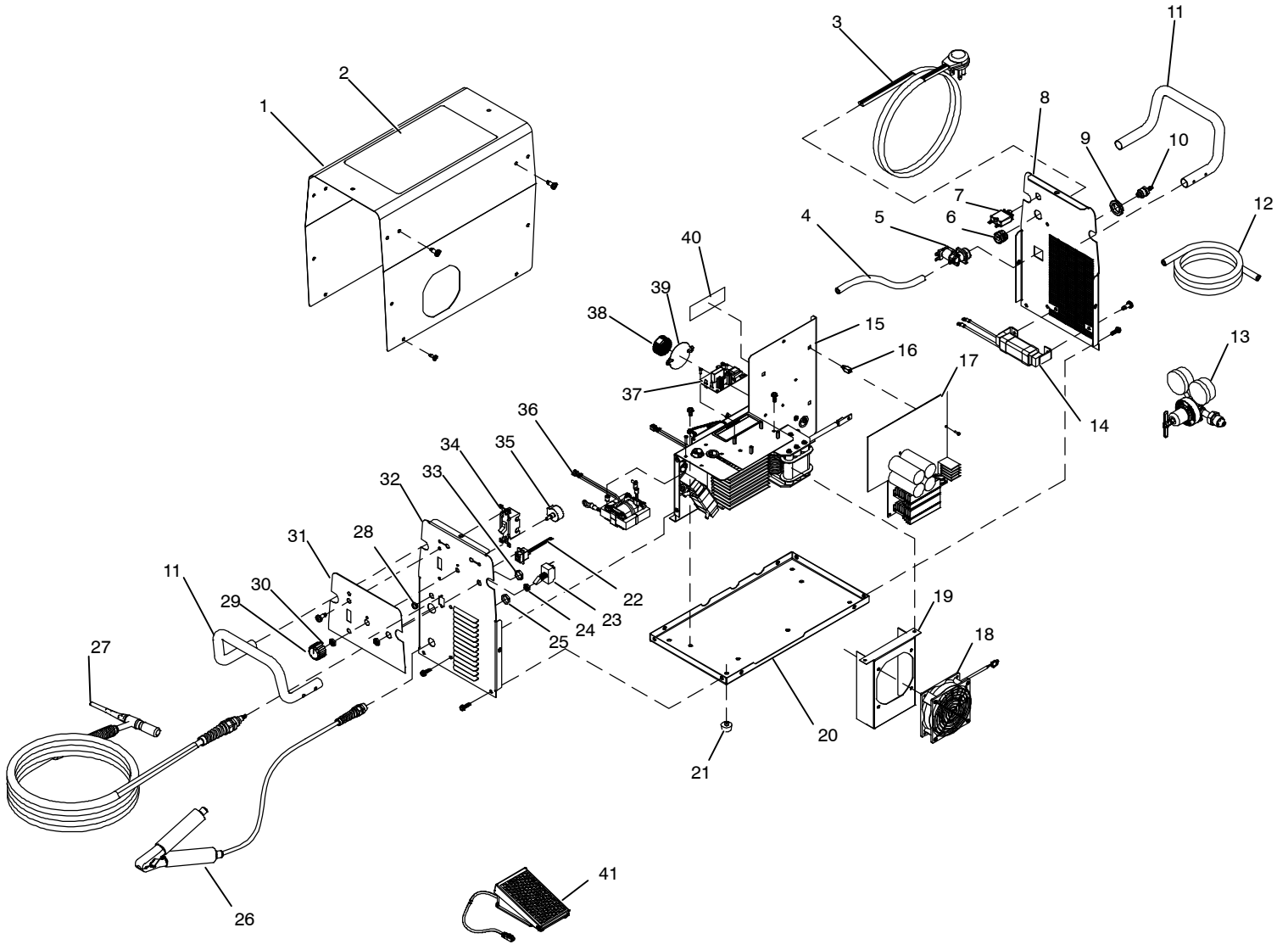


Figure 1-1. Main Assembly

Item No.	Dia. Mkgs.	Part No.	Description	Quantity
----------	------------	----------	-------------	----------

Figure 1-1. Main Assembly

...	1	...	+245 015 .. Wrapper,	1
...	2	...	230 366 .. Label, Warning General Precautionary Static	1
...	3	...	232 915 .. Cord Set, 250v 6-50p 12ga 3/C 7ft Spt-3 Jkt (Prior toMC191006J)	1
...	3	...	254 808 .. CORD SET,250V 6-50P 12GA 3/C 7FT SPT-3 JKT (Eff W/MC191006J)	1
...	4	...	188 048 .. Hose, Nprn Brd No 1 X .250 ID X 18.000	1

Eff w/LK330301J And Following

Item No.	Dia. Mkgs.	Part No.	Description	Quantity	
Figure 1-1. Main Assembly (Continued)					
...	5	GS1	216 607	.. Valve, 24VDC 2way Custom Port 1/8 Orf W/Frict (Prior to MD140022J)	1
...	5	GS1	238 805	.. Valve, 24VDC 2way Custom Port .054 Orf W/Frict (Eff w/ MD140022J)	1
...	6		111 443	.. Bushing, Strain Relief .240/.510 ID X .875 Mtg Hole	1
...	7	CB1	233 184	.. Supplementary Protector, Man Reset 1p 35A 250VAC	1
...	8		232 865	.. Panel, Rear (Prior to MB080009J)	1
...	8		246 515	.. Panel, Rear (Eff w/MB080009J)	1
...	9		137 761	.. Nut, 750 NPT 1.31 Hex .27 H Nyl Blk	1
...	10		232 940	.. Ftg, Hose Brs Barbed M 3/16 Tbg X 5/8-18 Thrd (Prior to MC490002J)	1
...	11		232 901	.. Handle, Carrying	2
...	12		237 592	.. Hose, Gas 12 Ft W/Clamps (Prior to MC490002J)	1
...	12		248 169	.. Hose, Gas 12 Ft W/Fittings (Eff w/MC490002J)	1
...	13		234 898	.. Regulator/Flowmeter, 0-50 CFH Argon/CO2 Kit (Prior to MC490002J)	1
...	13		234 263	.. Regulator/Flowgauge, 0-50 CFH AR/CO2 mix w/Filter (Eff w/MC490002J)	1
...	14	L1	237 414	.. Inductor, Input (Prior to MB0800009J)	1
...	14	L1	250 735	.. Inductor, Input (Eff w.MB0800009J)	1
...	15		232 922	.. Windtunnel, Assembly (see Figure 1-2)	1
...	16		083 147	.. Grommet, Scr No 8/10 Panel Hole .312 Sq .500 High	4
...	17	PC1	240 718	.. Circuit Card Assy, Control & Interface	1
...	18	FM1	232 923	.. Fan, Muffin 24VDC 4500 Rpm 240 Cfm 4.125 Mtg Holes	1
...	19		232 866	.. Plenum, Air	1
...	20		232 863	.. Base	1
...	21		239 388	.. Bumper, RBR .875 OD X .188 ID X .39 High Recessed	4
...	22		233 200	.. Cable Assy, RJ45	1
...	23	S2	134 847	.. Switch, Tgl Spdt 15A 125VAC On-none-on Spd Term Blk	1
...	24		605 321	.. Nut, 468-32 .56 Hex .09 H Brs Blk Use w/Switches	2
...	25		217 839	.. Nut, Nylon Strain Ril Pg13.5 .250thk 1.062od	1
...	26		232 908	.. Work Cable, W/Clamp (12 ft)	1
...	27		263 659	.. Torch Pkg, 12.5 Ft (3.8m), Rubber	1
...	28		245 038	.. Blank, Snap-in Nyl .500-.445 Mtg Hole Black D/D	1
...	29		207 079	.. Knob, Pointer 1.125 Dia	1
...	30		178 355	.. Nut, 375-32 .54 Hex .25 H Nyl Flange .62 D	1
...	31			.. Nameplate, Hobart EZ-TIG 165I (Order By Model And Serial No.)	1
...	32		232 864	.. Panel, Front (Prior to MC191006J)	1
...	32		254 809	.. Panel, Front (Eff w/MC191006J)	1
...	33		232 320	.. Nut, Nylon Thd Pg 16	1
...	34	S1	124 511	.. Switch, Tgl Dpst 40A 600VAC Scr Term (Prior to MC191006J)	1
...	34	S1	177 396	.. Switch, Rocker DPST 15A 250VAC Off-None-On (Eff w/MC191006J)	1
...	35	P1	233 165	.. Pot Assy, W/Leads & Connector & Leds Cp Flat 1t 2.	1
...	36	T2	232 909	.. Inductor, Arc Starter/Output 150 Amp	1
...	37	PC3	228 593	.. Circuit Card Assy, Arc Starter CE	1
...	38	L2	208 066	.. Inductor, Toroid 5 Amp 180 Uh, 12" Leads W/Quick Con	1
...	39		210 323	.. Insulator, Washer Inductor	1
...	40		185 835	.. Label, Warning Electric Shock/Exploding Parts	1
...	41		245 589	.. RFCS-RJ45 Foot Control (Includes)	
...			245 044	.. RFCS-RJ45 Foot Control (Pedal Only)	1
...			237 676	.. Cable, w/Connectors 14 Ft	1
...			235 493	.. Clamp, Stl Cush .187 Dia X .281 Mtg Hole Zinc Pld	1

+When ordering a component originally displaying a precautionary label, the label should also be ordered.

To maintain the factory original performance of your equipment, use only Manufacturer's Suggested Replacement Parts. Model and serial number required when ordering parts from your local distributor.

Eff w/LK330301J And Following

☞ Hardware is common and not available unless listed.

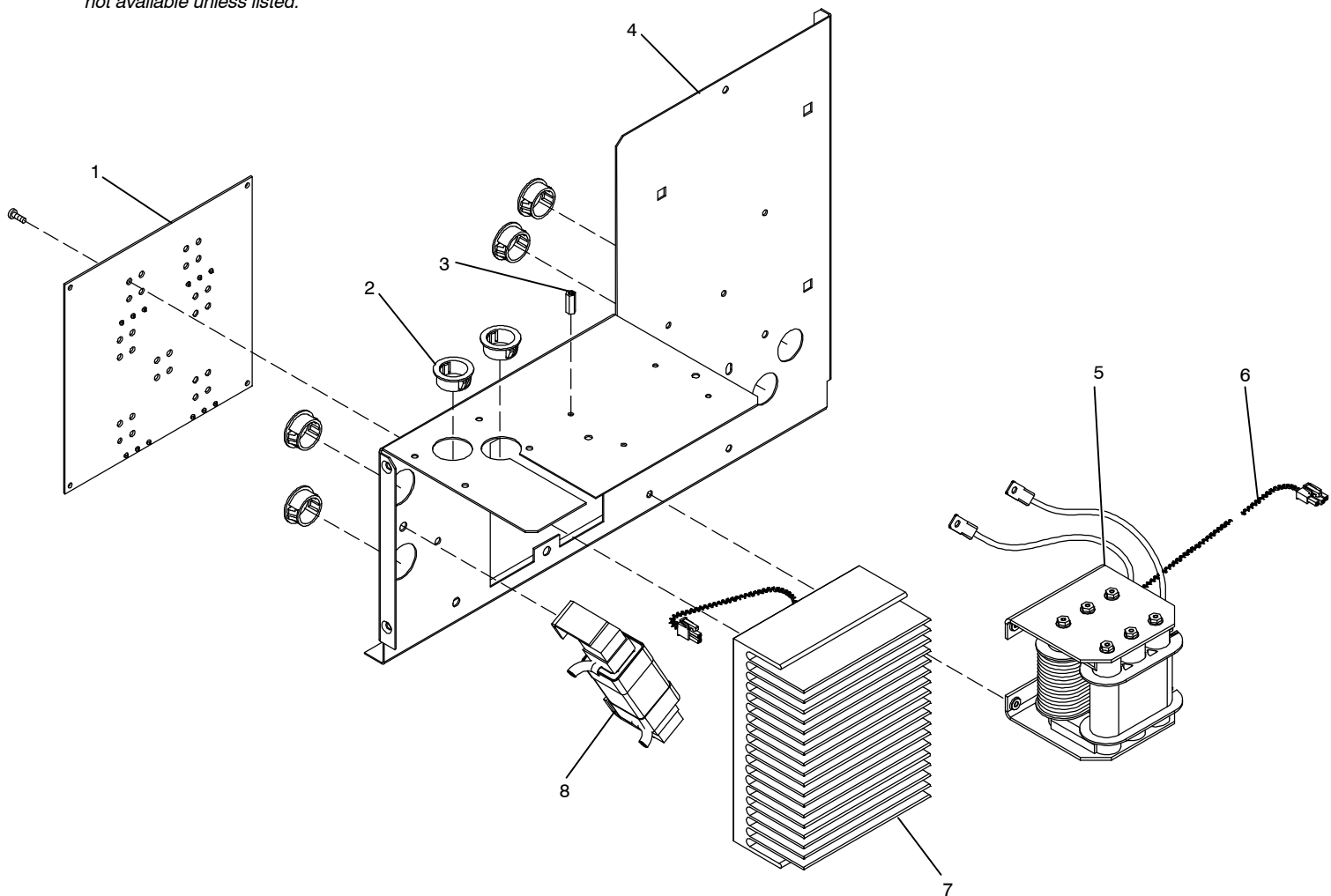


Figure 1-2. Windtunnel Assembly

805 135-B

Item No.	Dia. Mkgs.	Part No.	Description	Quantity
232 922 Figure 1-2. Windtunnel Assembly (Figure 1-1, Item 15)				
... 1	... PC2	.. 240 716	.. Circuit Card Assy, Commutator Control	1
... 2 242 084	.. Bushing, Snap-In Nyl	6
... 3 212 458	.. Stand-Off	4
... 4 +232 867	.. Panel, Midplane (Prior to ME005031J)	1
... 4 +263 717	.. Panel, Windtunnel (Eff w/ME005031J)	1
... 5	... T1	.. 232 854	.. XFMR, Main (Includes) (Prior to ME005031J)	1
... 5	... T1	.. 263 718	.. XFMR, Main (Includes) (Eff w/ME005031J)	1
... 6	... RT3	.. 235 532 Thermistor, NTC 10K Ohm @ 25 Deg C 17.00 In Lead	1
... 7 232 917	.. Heat Sink, Secondary Assy (See Figure 1-3)	1
... 8	... Z1	.. 232 853	.. Inductor, Output	1

+When ordering a component originally displaying a precautionary label, the label should also be ordered.

To maintain the factory original performance of your equipment, use only Manufacturer's Suggested Replacement Parts. Model and serial number required when ordering parts from your local distributor.

Eff w/LK330301J And Following

☞ Hardware is common and not available unless listed.

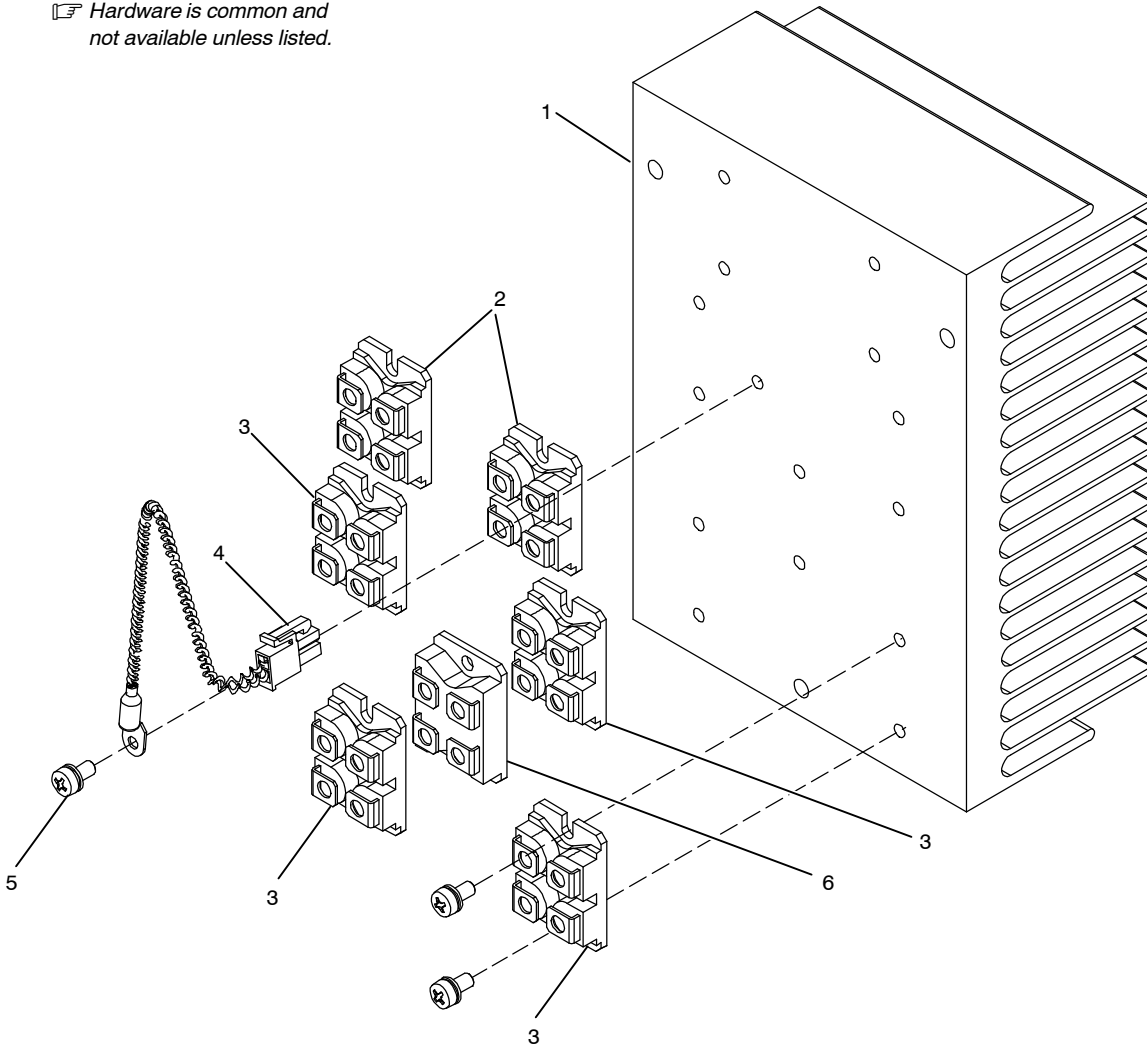


Figure 1-3. Heat Sink, Secondary Assembly

805 123-A

Item No.	Dia. Mkgs.	Part No.	Description	Quantity
232 917 Figure 1-3. Heat Sink, Secondary Assembly (Figure 1-2, Item 7)				
1		232 869	Heat Sink, Secondary	1
2	D9,D12	257 232	Diode, Ultra-Fast Recovery 90 A 600 V Dual SOT-227	2
3	Q2,3,4,5	263 089	Transistor, IGBT 100 A 600 V SOT-227	4
4	RT2	213 353	Thermistor, NTC 30K Ohm @ 25 Deg C 8 In Lead	1
5		212 038	Screw, M4 .7 x 8.5 Pan HD-PHL STL PLD Sems Split/FI	15
6	SR1	199 952	Diode, Power Module 55 Amp 600 V 1 PH Fast Recovery	1

To maintain the factory original performance of your equipment, use only Manufacturer's Suggested Replacement Parts. Model and serial number required when ordering parts from your local distributor.

Miller Electric Mfg. LLC

An Illinois Tool Works Company
1635 West Spencer Street
Appleton, WI 54914 USA

For Assistance:
Call 1-800-332-3281

